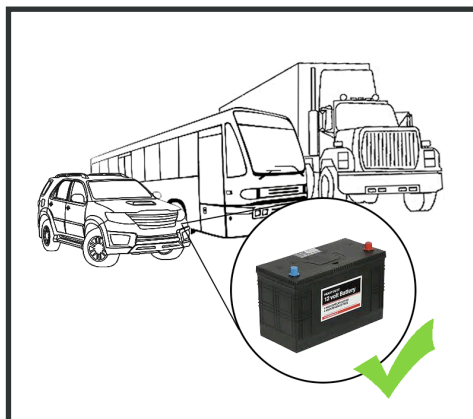


# SW-015

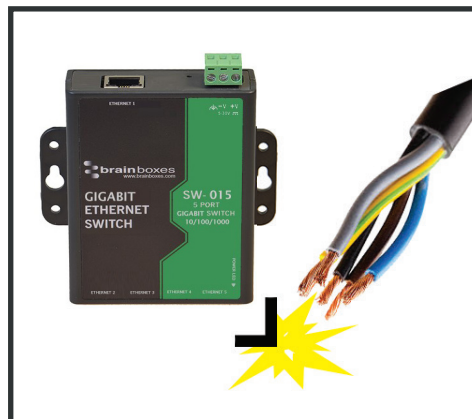
# 5 Port Gigabit Ethernet Switch

5 Port Unmanaged Gigabit Ethernet Switch Wall Mountable

- 5 Port Gigabit Ethernet Switch
- Power input: +5V to +30V DC
- Compact design with integral wall mount
- -10°C to +60°C/+14°F to +140°F temperature range
- Integral wall mount or optional DIN rail mount
- Connection LEDs on each Port



+5 to +30 Volt Power Input enables the device to be run from a standard car battery - ideal for in vehicle applications



Non conducting polyamide casing prevents electrical conduction - for safer installation



Integral wall mount option can be used with MK-048 clips to allow DIN rail mounting



# SW-015

# 5 Port Gigabit Ethernet Switch

No software needed: Simply plug in any ethernet cable

All Ethernet ports are Auto MDI/MDIX supporting straight through or crossover Ethernet cables

Automatic detection of data transmission speed: 10 or 100 or 1000 MBps

-10°C to +60°C/+14°F to +140°F temperature range



Easy Wire Removable screw terminal block

Wide Range Input Power: +5VDC to +30VDC

Power consumption is optimised based on the status of the link device

Wall mount holes compatible with MK-048 DIN mount clips (MK-048 sold separately)

IP30 Non-conducting polyamide case

## Connectors

Screw Terminals	3 way x 0.2inch/5.08mm pitch power supply
Wire Thickness	0.150 inch, 3.81mm, 20 pins, 12+8 screw terminals, #26 - #16 AWG, 0.14mm <sup>2</sup> -1.3mm <sup>2</sup>

## Power Supply

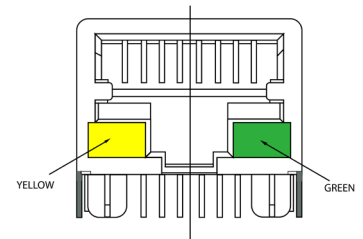
Power Consumption	3.6W Max: 720mA@ +5VDC/120mA@+30VDC
Power Supply input	Unregulated +5V to +30Volts DC, reverse polarity protection
Isolation	1500VRMS Magnetic isolation from Ethernet

## Environmental

Operating Temperature	-10°C to +60°C / +14°F to +140°F
Storage Temperature	-10°C to +70°C / +14°F to +158°F
Ambient Relative Humidity	5 to 95% (non-condensing)

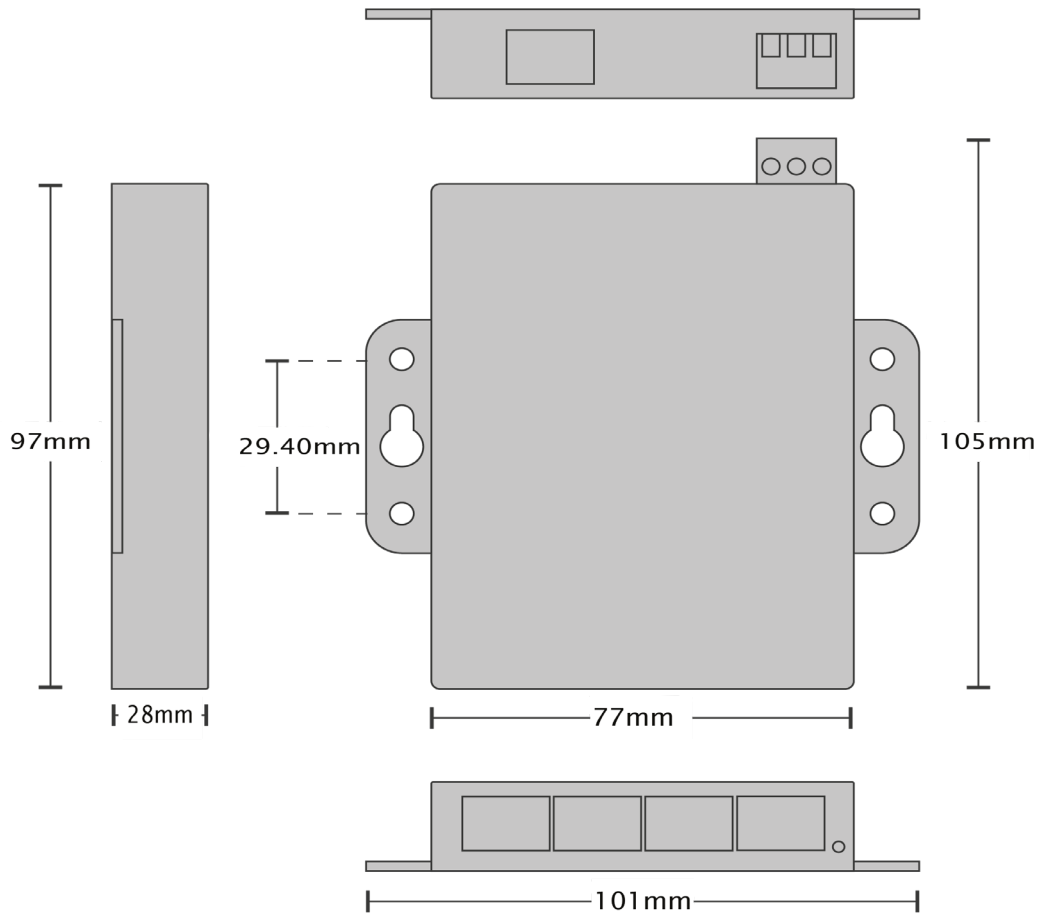
## Magjack LED Information

Link/Activity	Solid	Connection established
	Flashing	Data communication
Speed	Yellow	1000Mbps
	Green	100Mbps

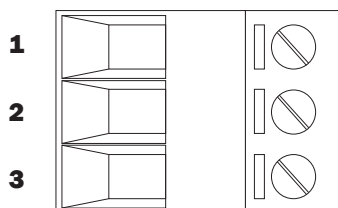


## Ethernet

Ethernet Port	5 x RJ45 jack, 10/100/1000Mbps autosensing, crossover auto sensing (Auto MDIX)
Protection	1,500 Volts magnetic isolation between ports
Housing	IP-30 rated non-conducting polyamide case

**SW-015**
**5 Port Gigabit Ethernet Switch**

**Power Terminal Pin Outs**

PIN	FUNCTION
1	+V Power
2	-V Power
3	Functional Earth


**Ethernet Ports x4 Pin Outs**

PIN	FUNCTION
1	TxRxA+
2	TxRxA-
3	TxRxB+
4	TxRxC+
5	TxRxC-
6	TxRxB-
7	TxRxD+
8	TxRxD-

**Lifetime Warranty and Support:**

We can help with every aspect of your project, from getting you up and running to custom application.

# SW-015

# 5 Port Gigabit Ethernet Switch

### Product Information

Product Weight 0.1289 kg/4.55 ounces  
 Product Dimensions 106x101x26 mm/4.2x4.0x1.1 inches

### Product Information

Product Weight 0.1289 kg/4.55 ounces  
 Product Dimensions 106x101x26 mm/4.2x4.0x1.1 inches

### Packaging Information

Packaging Quick Start Guide  
 Device 5 Port Gigabit Ethernet Switch  
 Packaged Weight 0.209 kg/7.37 ounces  
 Packaged Dims 160x140x50mm/6.3x5.5x1.9 inches  
 GTIN Universal Code 837324004366

### Approvals

Industry Approvals Microsoft Certified Gold Partner, WEEE, RoHS, AEO (C-TPAT), CE, METL  
 Complies with UL62368-1, UKCA

### Product Support

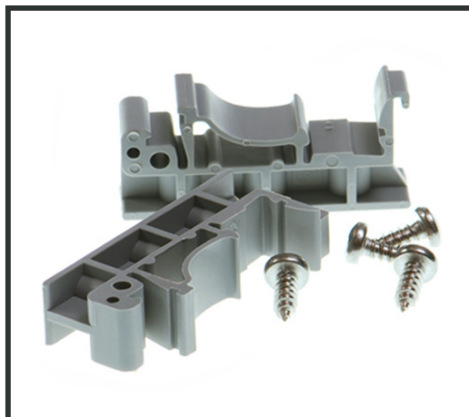
Warranty Lifetime - online registration required  
 Support Lifetime Web, Email and Phone Support from fully qualified, friendly staff who work in and alongside the Product Development Team

### Additional Information

OEM option Available for bulk buy OEM



**PW-600**  
 Power supply with connectors for UK, USA, EU and AUS mains socket. 'Tails' are suitable for connecting to screw terminal blocks.



**MK-048**  
 DIN Rail Mounting Kit Suitable for attaching to SW-005 to make device clip on to a DIN rail.



**SW Range**  
 Switch products available in a wide range of formats and specifications.

[www.brainboxes.com](http://www.brainboxes.com)