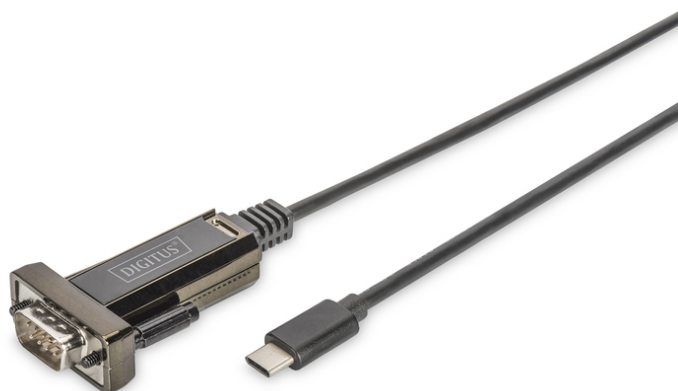


DIGITUS USB Type-C™ to serial adapter

DA-70166
EAN 4016032435129



USB Type C 2.0 to serial Converter, DSUB 9M 1m cable length, FTDI chipset

The DIGITUS® USB Type-C™ serial adapter is a practical solution for serial connectivity. RS232 serial interfaces are no longer available on new hardware, so the DIGITUS® USB Type-C™ serial adapter enables data exchange between a computer USB Type-C™ port and peripheral devices with serial interfaces (COM port, RS232). These include, for example, weather stations, sensors, machine control systems, set-top boxes, gaming consoles, PDAs, scanners, modems, ISDN adapters and many other peripheral devices. The USB Type-C™ serial adapter is downwardly compatible with USB 1.1 and enables adaptable baud rates of between 75 and 128,000 bits per second. The customizable FTDI chipset is compatible with all common operating systems and also supports power management and remote wake up. A separate power supply is not required, because the device is powered through the USB connection.

Connects serial devices via USB Type-C™ port to a PC

- Provides a serial RS232 interface via USB Type-C™
- Compliant with USB 2.0 standards
- Downward compatibility with USB 1.1
- Data transfer rates 1Mbps and more
- Support remote wake-up and power management
- Cable length: 1m
- Chipset: FTDI / FT232RL
- Supports Windows 11, 10, 8.1, 8, 7, Vista, XP, Mac OS X and Linux

Attributes

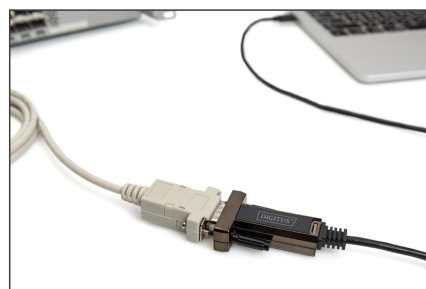
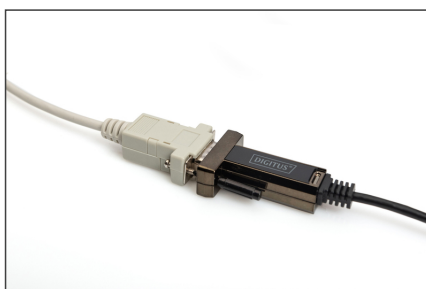
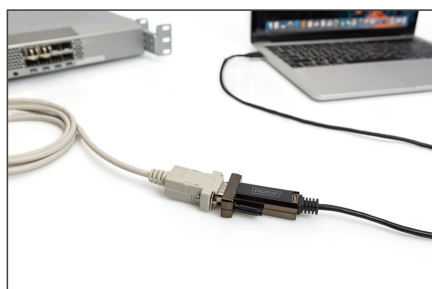
- USB-C Products: yes

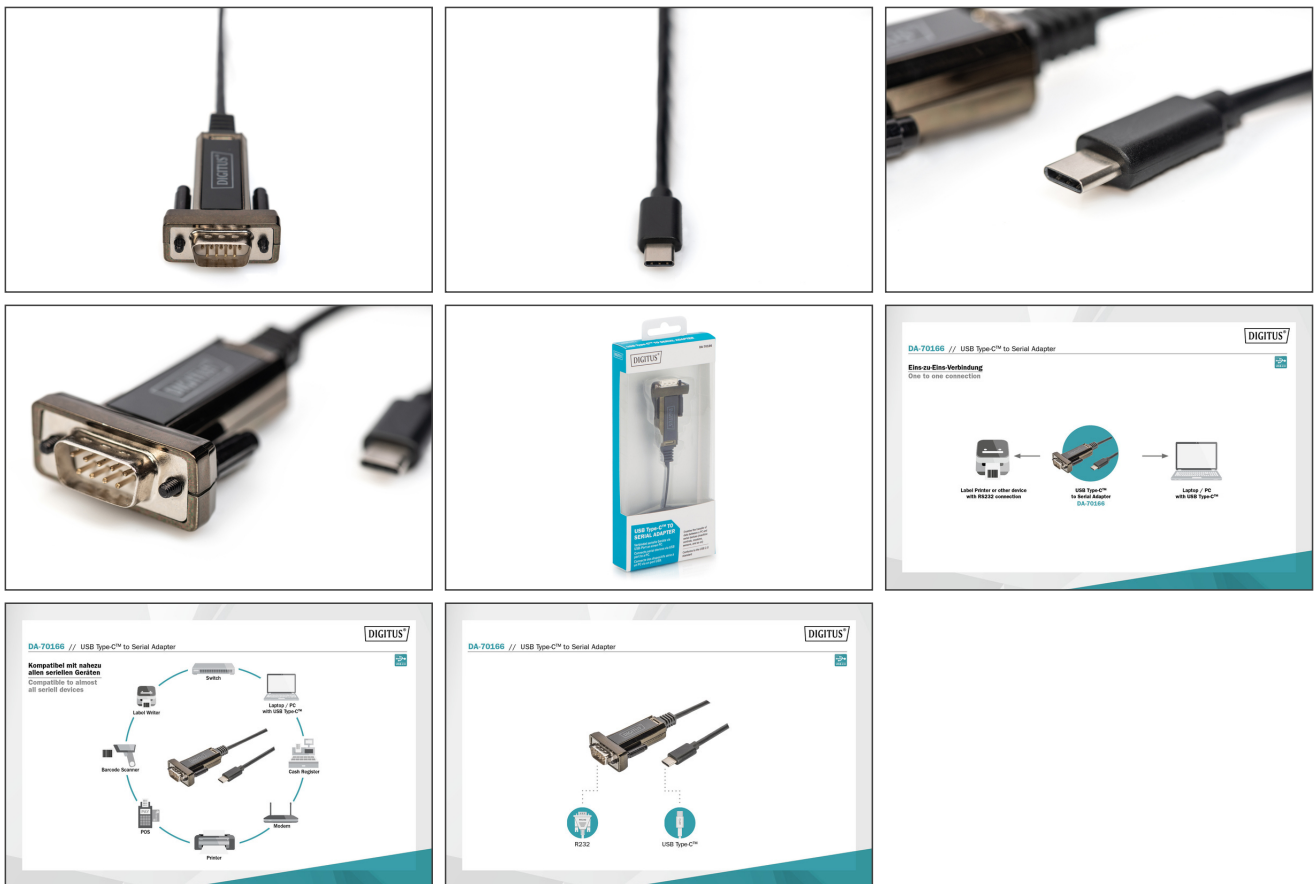
Package contents

- USB / serial adapter
- Driver CD

Logistics						
	Number (pcs)	Weight (kg)	Depth (cm)	Width (cm)	Height (cm)	cm³
Packaging Unit Carton	150	16.80	50.40	21.30	41.80	44,873.10
Packaging Unit Inside	1	0.11	20.30	8.60	2.30	401.53
Packaging Unit Single	1	0.11	20.30	8.60	2.30	401.53
Net single without Packaging	1	0.02	100.00	3.50	1.50	0.00

More images:





Safety notes

- Overloading can lead to overheating and damage to the appliance or the connected peripherals.
- If necessary, use an external power supply to ensure stable performance.
- If devices such as external hard disks or printers that require a high power consumption are connected, the device should be used with an external power supply. Otherwise, the device could be overloaded or functional problems could occur.
- Do not expose the device to rain, moisture, vapors or liquids.
- Do not insert any objects into the device.
- Do not attempt to repair the unit or open the housing without authorization. You risk an electric shock!
- Ensure adequate ventilation to prevent damage due to overheating.
- Dust, moisture, vapors and strong cleaning agents or solvents can cause damage to the device.
- Disconnect the appliance from the power supply and the connected devices before cleaning.
- Clean the device with a dust-free cloth.

EU responsible person

EU based economic operator ensuring the product complies with the required regulations.

ASSMANN Electronic GmbH
Auf dem Schöffel 3
Lüdenscheid, Germany
<https://www.assmann.com>
info@assmann.com