

BATTERY INSTALLATION

External Battery Module

PowerWalker BP 12x120T-40x9Ah

Battery Installation Guide

BATTERY INSTALLATION

1. Instructions

Safety Instructions

- Installation or battery replacement must be performed by professional technical personnel.
- **CAUTION:** To reduce the risk of fire, replace with the same number and type of battery.
- **CAUTION:** Risk of electric shock, Battery circuit is not isolated from AC input, hazardous voltage may exist between battery terminals and ground. Test before touching.
- Do not dispose of batteries in a fire. The batteries may explode.
- Do not open or mutilate batteries. Released electrolyte is harmful to the skin and eyes. It may be toxic.
- A battery can present a risk of electrical shock and high short circuit current. the following precautions should be observed when working on batteries:
 1. Remove watches, rings, or other metal objects.
 2. Use tools with insulated handles.
 3. Wear rubber gloves and boots.
 4. Do not lay tools or metal parts on top of batteries.
 5. Disconnect charging source prior to connecting or disconnecting battery terminals.

Disposing of The Product

- The BATTERY BOX contains internal material that (in case of dismiss / disposal) are considered TOXIC and HAZARDOUS WASTE, such as electronic circuit boards and batteries. Treat these materials according to the applicable laws referring to qualified service personnel. Their proper disposal contributes to respect the environment and human health.
- The replaced batteries must be sent to a specialist disposal company by means of recycling (batteries are classified by law as “toxic waste”)

Environmental Protection

- No hazardous materials such as CFC, HCFC or asbestos are used in this product.
- When evaluating packaging, the choice of material has been made favoring recyclable materials.
- For correct disposal, please separate and identify the type of material of which the packaging is made in the table below. Dispose of all material in compliance with standards in force in the country in which the product is used.

Packaging Part	Material
Pallet	Plywood
Protective corner Board	Cardboard
Packaging belt	High strength polyester
Protective film	Polyethylene film
Carton	Cardboard
Protective PE form	EPS
Protective bag	HD Polyethylene

BATTERY INSTALLATION

2. Battery Installation

2.1). Take out the side cover by removing screws on top & bottom according to Fig 2-1:



Fig 2-1

2.2). Remove the screws and the battery keep part for one side refer to Fig 2-2:

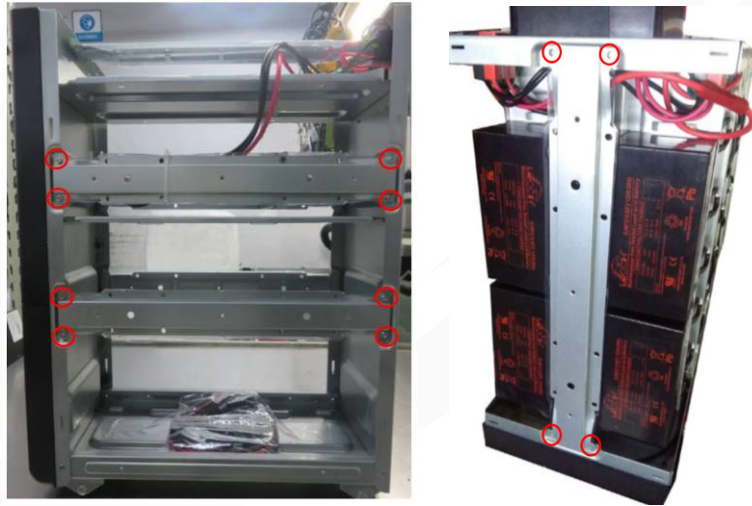


Fig 2-2

2.3). Put the batteries into the chassis and install the side battery keep brackets refer to the Fig 2-3:



BATTERY INSTALLATION

Fig 2-3

2.4). Connect the battery wires:

A). Connect the black battery wire11(L=250mm) *2pcs of top 4 battery according to Fig 2-4:

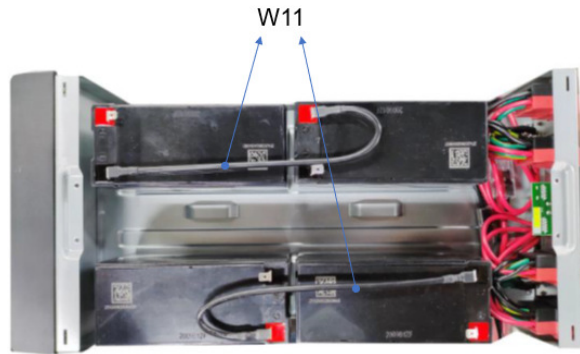


Fig 2-4

B). Connect the black battery wire12&13*1pcs of rear panel to the negative, and connect the red battery wire14&15&16&17*1pcs of rear panel to the positive, according to Fig 2-5:

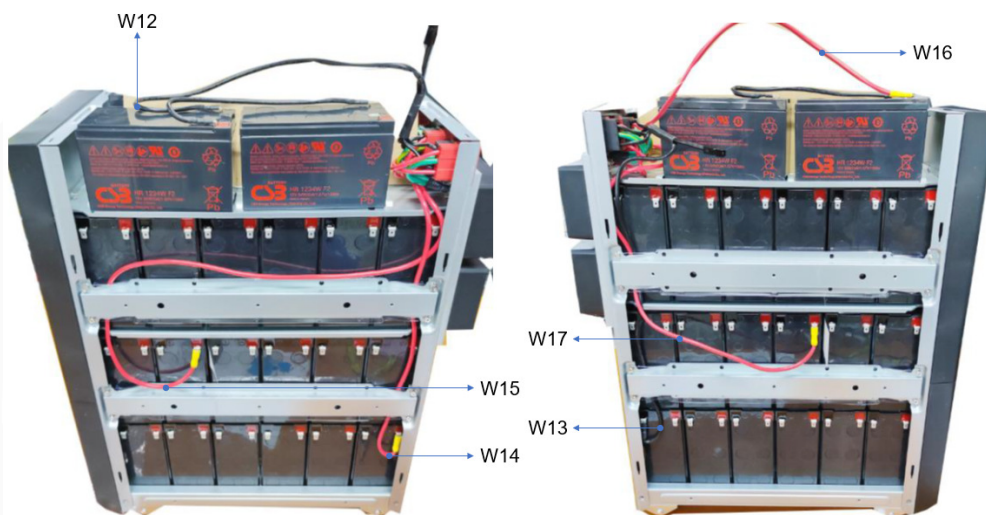
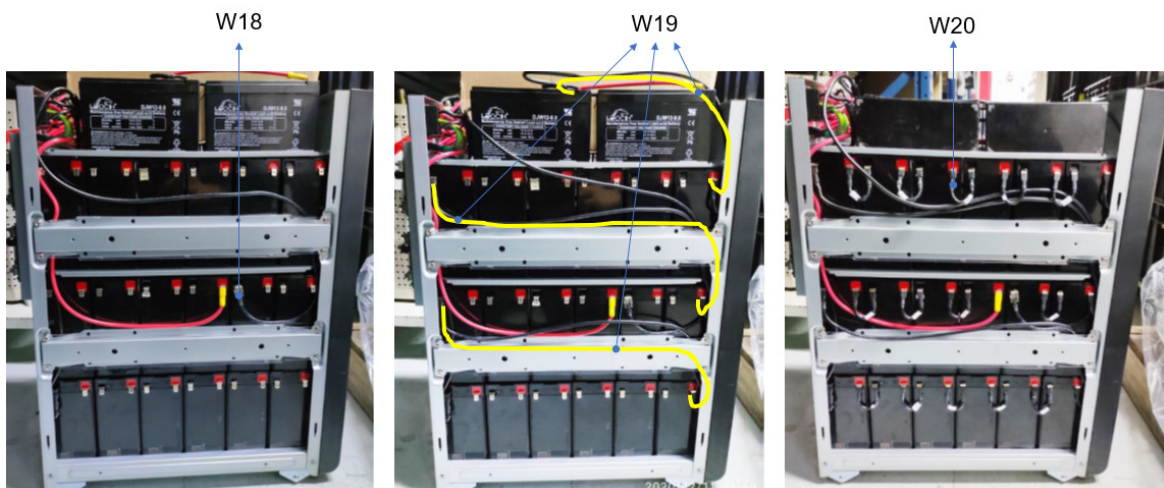


Fig 2-5

C). First connect the single black wire18(L=790mm) *1pcs, then the black wire19(L=550mm) *3pcs, last the black ipsilateral jumper wire20(L=70mm) *14pcs, according to Fig 2-6:



BATTERY INSTALLATION

Fig 2-6

D). On the other side, first connect the single black wire21(L=580mm) *1pcs, then the black wire19(L=550mm) *3pcs, last the black ipsilateral jumper wire20(L=70mm) *14pcs, according to Fig 2-7:

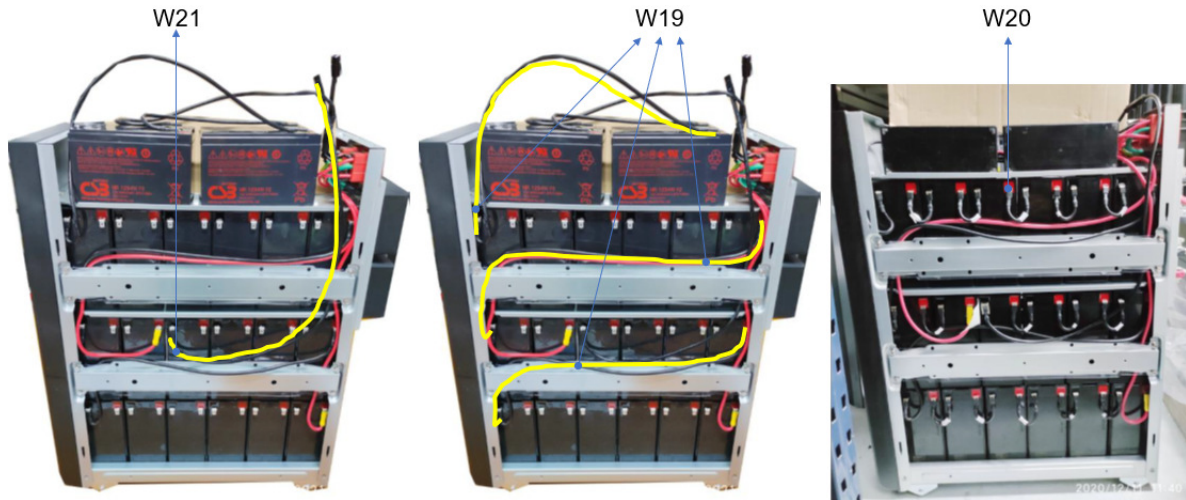


Fig 2-7

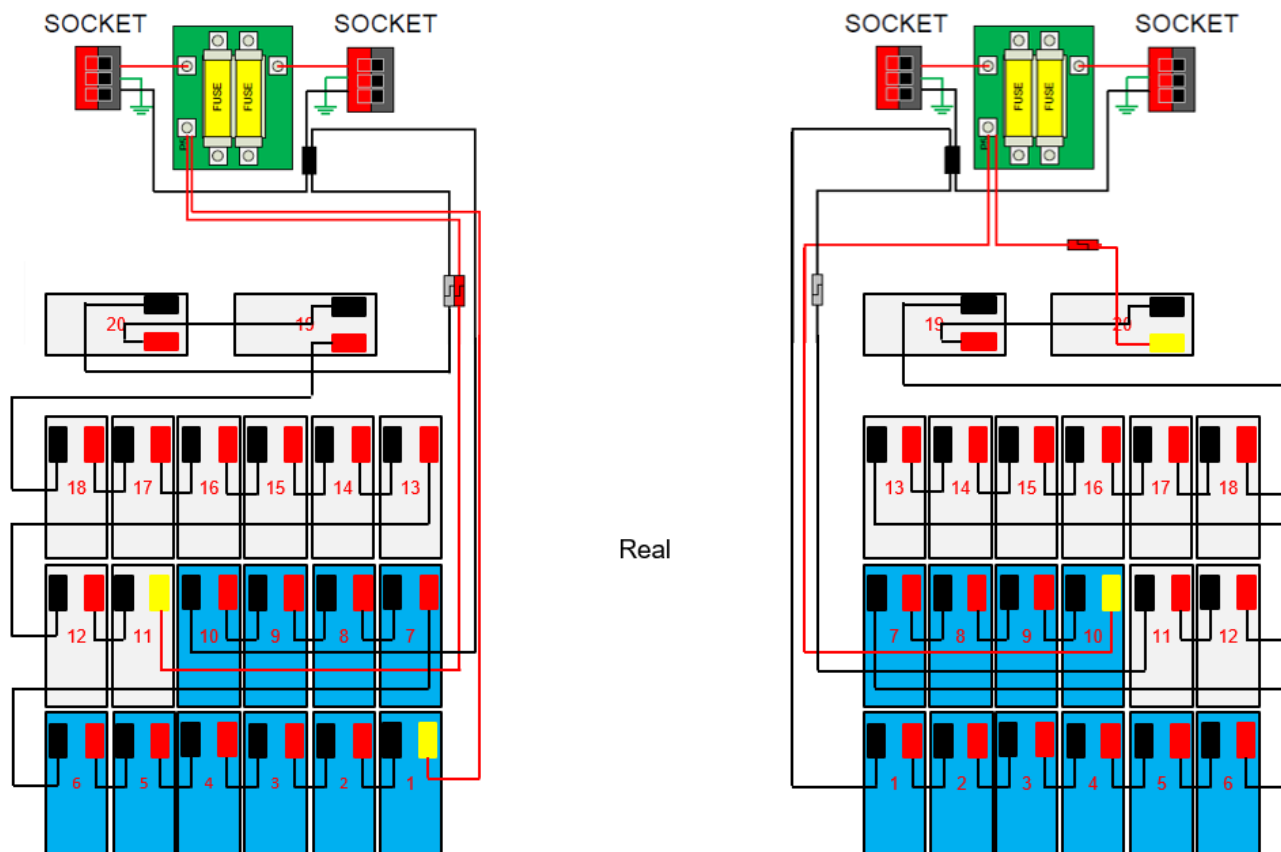
2.5). Install the right and left covers according to below Fig 2-8:



Fig 2-8

INTERNAL WIRING DIAGRAM

3. Internal wiring diagram



Battery wire list:

Model	Number of the Wire	Quantity	Wire Specification	Wire Length mm
PowerWalker BP I2x120T-40x9Ah	W11	2	10 AWG BLK	250
	W12	1	10 AWG BLK	460
	W13	1	10 AWG BLK	530
	W14	1	10 AWG RED	700
	W15	1	10 AWG RED	850
	W16	1	10 AWG RED	610
	W17	1	10 AWG RED	850
	W18	1	10 AWG BLK	790
	W19	6	10 AWG BLK	550
	W20	28	10 AWG BLK	70
	W21	1	10 AWG BLK	580

SPECIFICATION

4. Specification

Battery configuration

Model	Voltage Nominal	Battery Configuration		
		Battery Type	Set	Total Q'ty
PowerWalker BPH I2x120T-40 (without Bat)	240V	12V 9AH	2	40
PowerWalker BP I2x120T-40x9Ah (with Bat)	240V	12V 9AH	2	40
Double battery, 2srting (Including +BAT & -BAT), Only for 10K 3-3				

Dimensions and weights

Model		Net weight kg	Gross weight kg	Outline dimension (W*H*D/mm)	Packaging dimension (W*H*D/mm)
PowerWalker VFI 10k ICT IoT 3/3 BI	PowerWalker BP I2x120T-40x9Ah	115.6	125.5	210*599*416	370*643*672
	PowerWalker BPH I2x120T-40 (without Bat)	15.6	25.5	210*599*416	370*643*672