

BATTERY INSTALLATION

External Battery Module

PowerWalker BP 12x120R-20x9Ah

Battery Installation Guide

BATTERY INSTALLATION

1. Instructions

Safety Instructions

- Installation or battery replacement must be performed by professional technical personnel.
- **CAUTION:** To reduce the risk of fire, replace with the same number and type of battery.
- **CAUTION:** Risk of electric shock, Battery circuit is not isolated from AC input, hazardous voltage may exist between battery terminals and ground. Test before touching.
- Do not dispose of batteries in a fire. The batteries may explode.
- Do not open or mutilate batteries. Released electrolyte is harmful to the skin and eyes. It may be toxic.
- A battery can present a risk of electrical shock and high short circuit current. the following precautions should be observed when working on batteries:
 1. Remove watches, rings, or other metal objects.
 2. Use tools with insulated handles.
 3. Wear rubber gloves and boots.
 4. Do not lay tools or metal parts on top of batteries.
 5. Disconnect charging source prior to connecting or disconnecting battery terminals.

Disposing of The Product

- The BATTERY BOX contains internal material that (in case of dismiss / disposal) are considered TOXIC and HAZARDOUS WASTE, such as electronic circuit boards and batteries. Treat these materials according to the applicable laws referring to qualified service personnel. Their proper disposal contributes to respect the environment and human health.
- The replaced batteries must be sent to a specialist disposal company by means of recycling (batteries are classified by law as “toxic waste”)

Environmental Protection

- No hazardous materials such as CFC, HCFC or asbestos are used in this product.
- When evaluating packaging, the choice of material has been made favoring recyclable materials.
- For correct disposal, please separate and identify the type of material of which the packaging is made in the table below. Dispose of all material in compliance with standards in force in the country in which the product is used.

Packaging Part	Material
Pallet	Plywood
Protective corner Board	Cardboard
Packaging belt	High strength polyester
Protective film	Polyethylene film
Carton	Cardboard
Protective PE form	EPS
Protective bag	HD Polyethylene

BATTERY INSTALLATION

2. Battery Installation

2.1). Take out the front panel, take out the top cover by removing screws on top & rear & side according to Fig 2-1:

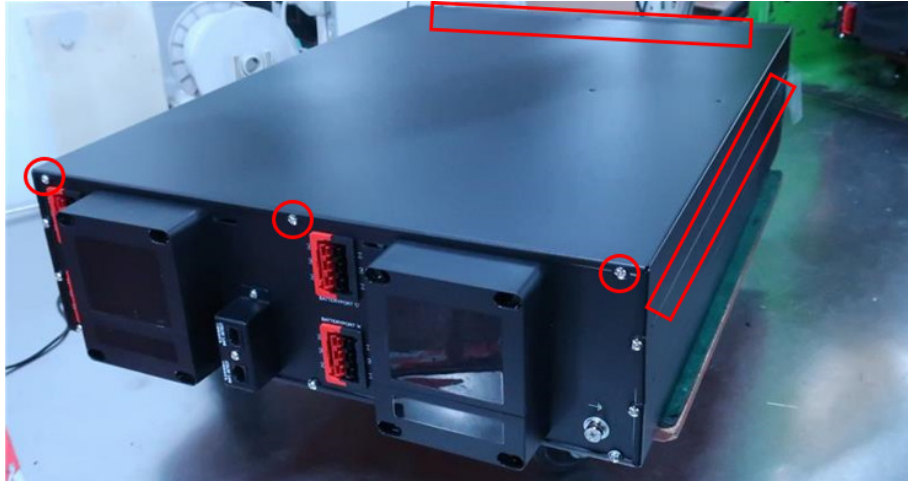


Fig 2-1

2.2). Put the battery into the chassis refer to Fig 2-2:

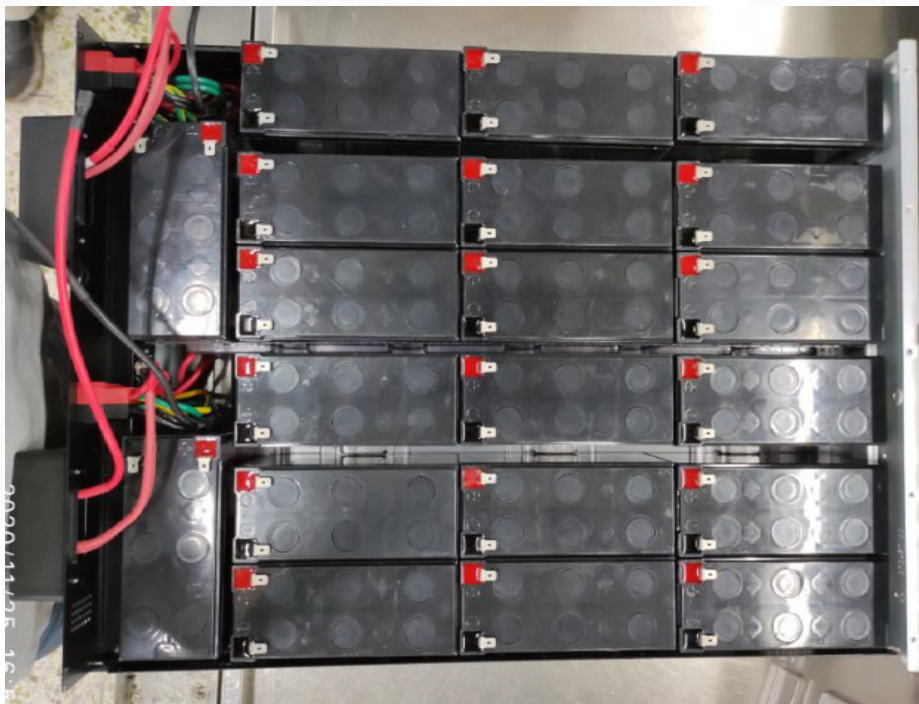


Fig 2-2

BATTERY INSTALLATION

2.3). Connect the black battery wire11&12&13*2pcs refer to Fig 2-3:

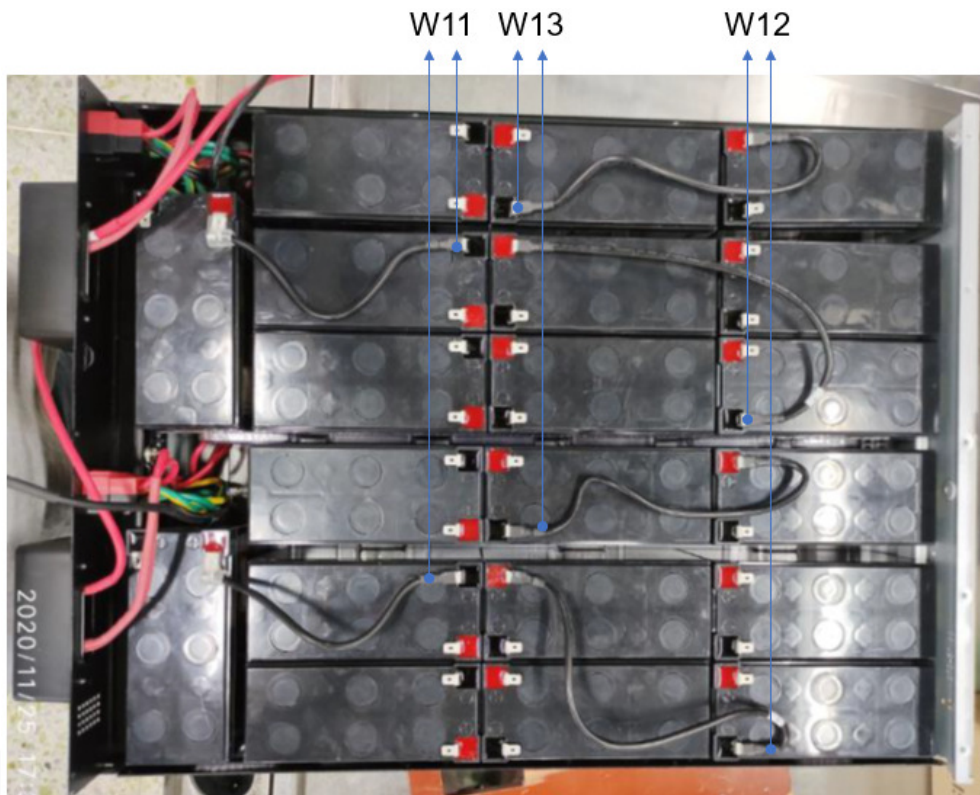


Fig 2-3

2.4). Connect the black battery wire14*4pcs and wire15*8pcs refer to Fig 2-4:

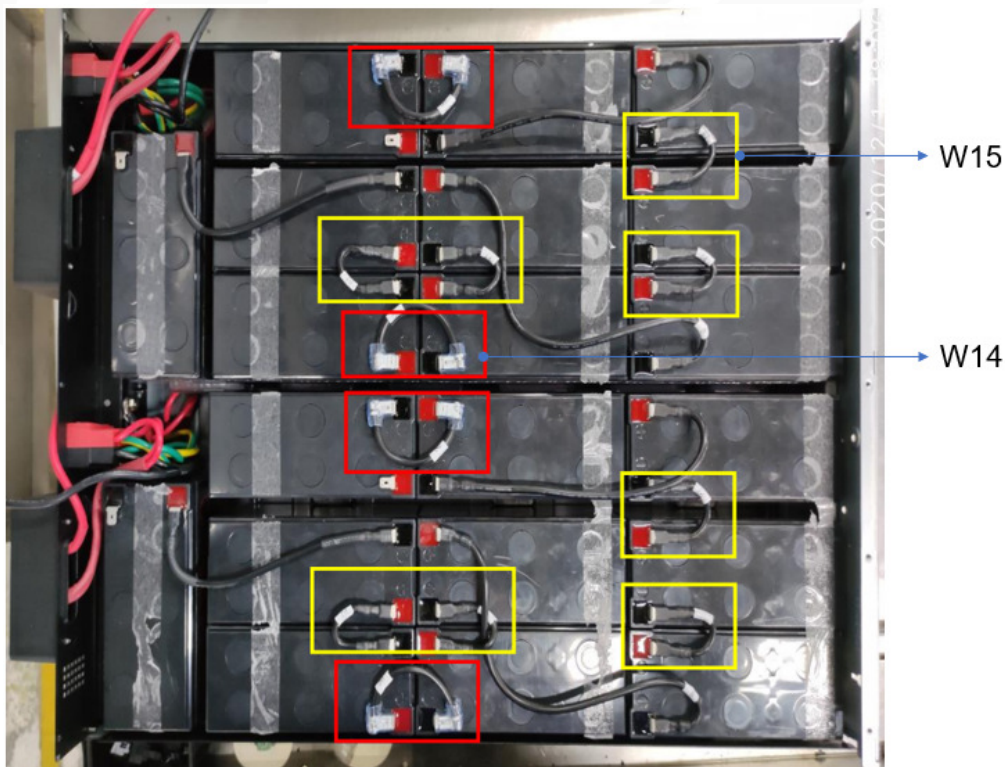


Fig 2-4

BATTERY INSTALLATION

2.5). Install the plastic battery cover*2pcs (double-sided adhesive is glued to the inner surface of the blister), connect the red battery wire16*2pcs and the black battery wire17*2pcs, then fix the two red line with a nylon self-adhesive tie mount refer to Fig 2-5:



Fig 2-5

2.6). Install the top cover with screws refer to Fig 2-6:

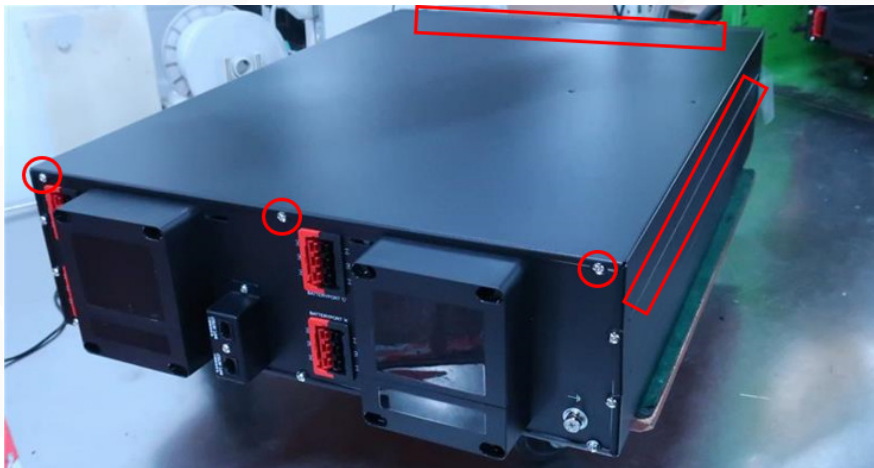
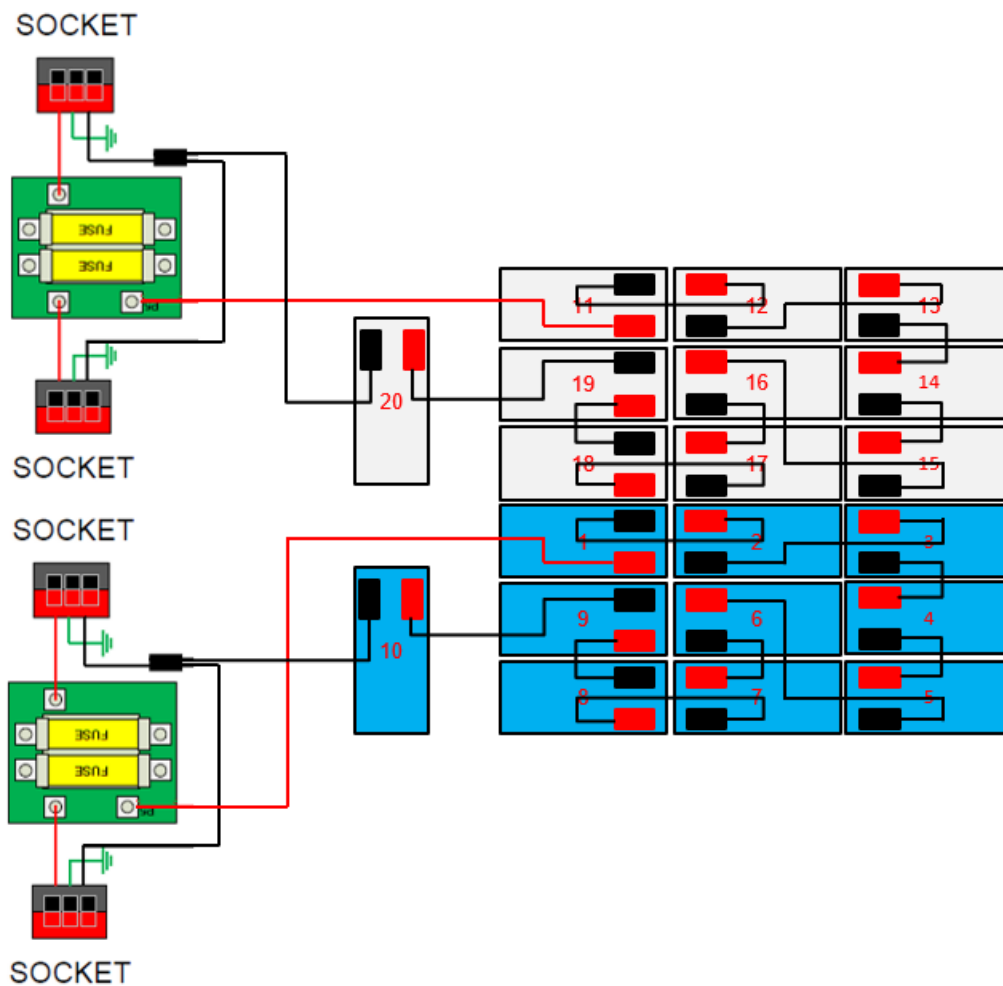


Fig 2-6

BATTERY INSTALLATION

3. Internal wiring diagram



Battery wire list:

Model	Number of the Wire	Quantity	Wire Specification	Wire Length (mm)
PowerWalker BP 12x120R-20x9Ah	W11	2	10 AWG BLK	170
	W12	2	10 AWG BLK	280
	W13	2	10 AWG BLK	220
	W14	4	10 AWG BLK	105
	W15	8	10 AWG BLK	70
	W16	2	10 AWG RED	300
	W17	2	10 AWG BLK	220

SPECIFICATION

4. Specification

Battery configuration

Model	Voltage Nominal	Battery Configuration		
		Battery Type	Set	Total Q'ty
PowerWalker BPH I2x120R-20	240V	12V 9AH	1	20
PowerWalker BP I2x120R-20x9Ah	240V	12V 9AH	1	20
Double battery, 1srting (Including +BAT & -BAT), Only for 10K 3-3				

Dimensions and weights

Model		Net weight (kg)	Gross weight (kg)	Outline dimension (W*H*D/mm)	Packaging dimension (W*H*D /mm)
PowerWalker BP for VFI 10k ICRE IoT 3/3	PowerWalker BP I2x120R-20x9Ah	61.0	65.9	559*438*129	790*572*343
	PowerWalker BPH I2x120R-20	11.59	16.49	559*438*129	790*572*343